



*THE WHITE HOUSE
HISTORICAL ASSOCIATION*

Studying the World's Most Famous Address

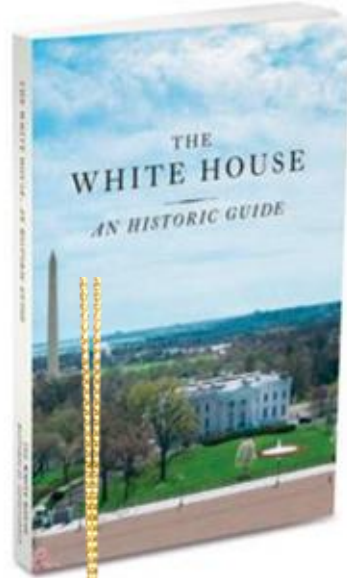
Using the White House as a Lens for Viewing Executive Power in History

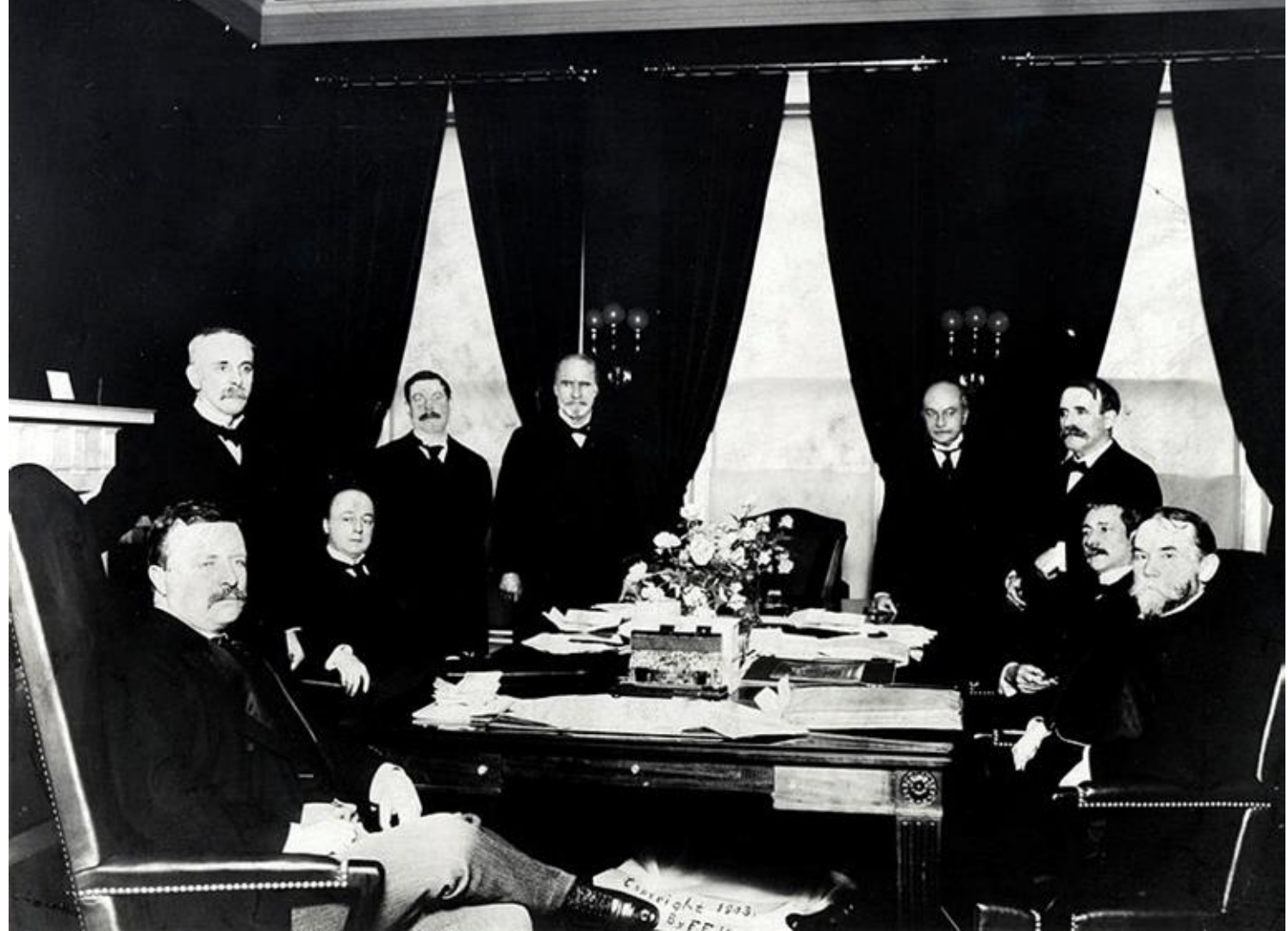
Whitney Hayne

Director of Education at the White House Historical Association

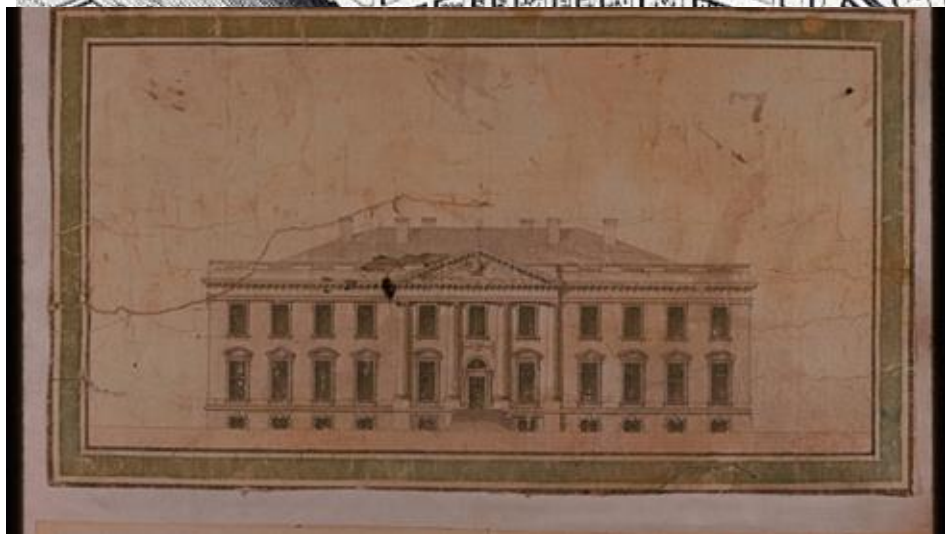
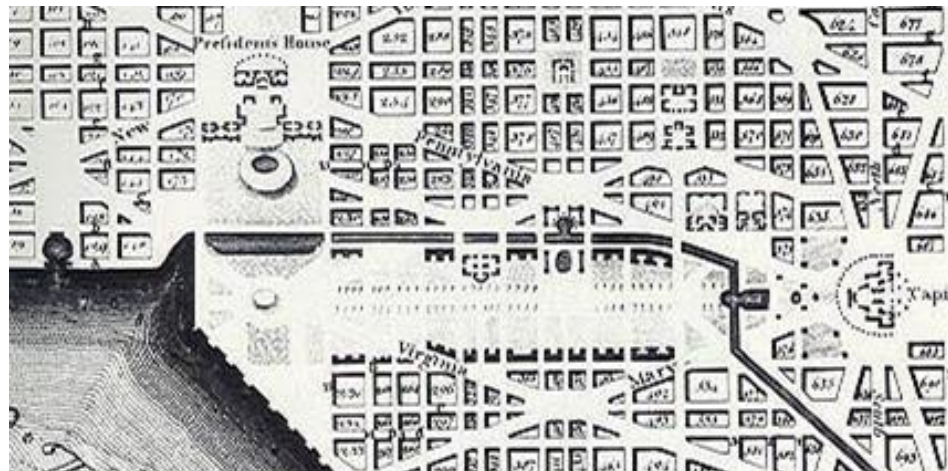
What is WHHA?





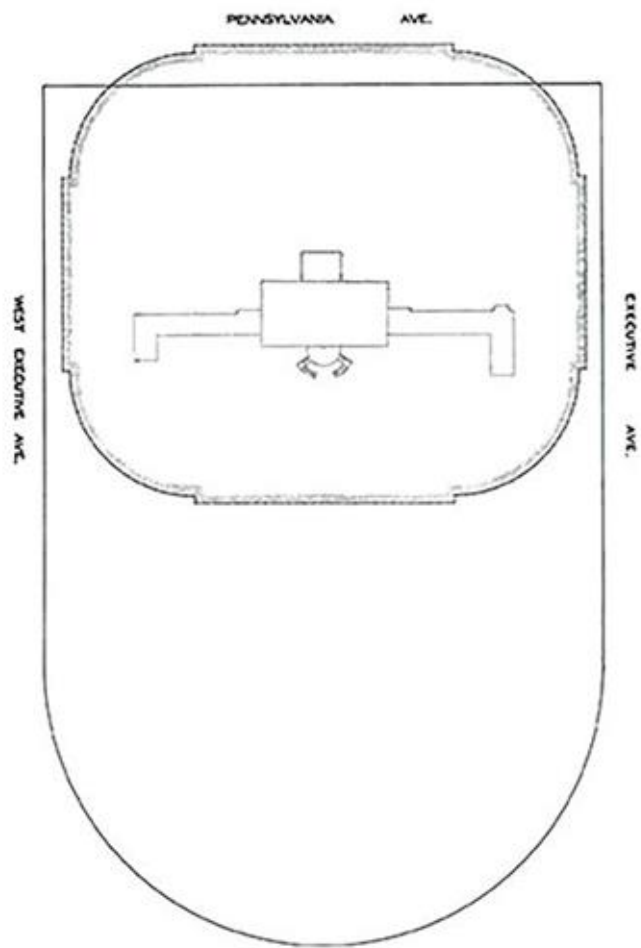


Cleveland 1903.
By F.F. ...







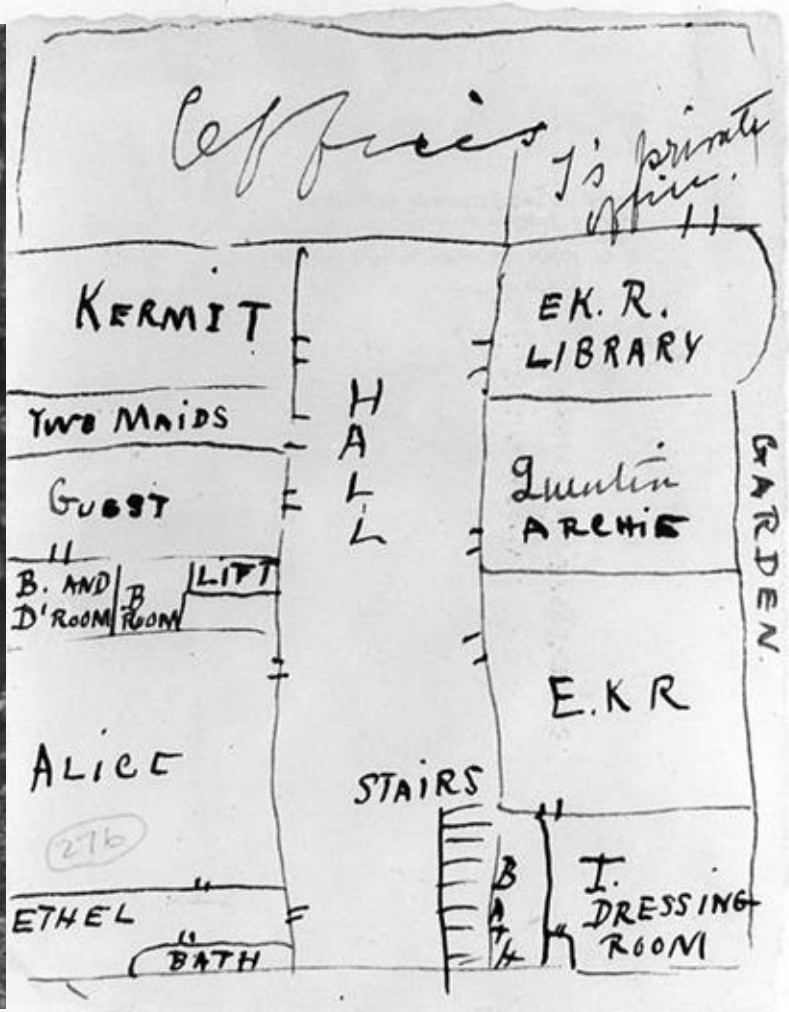








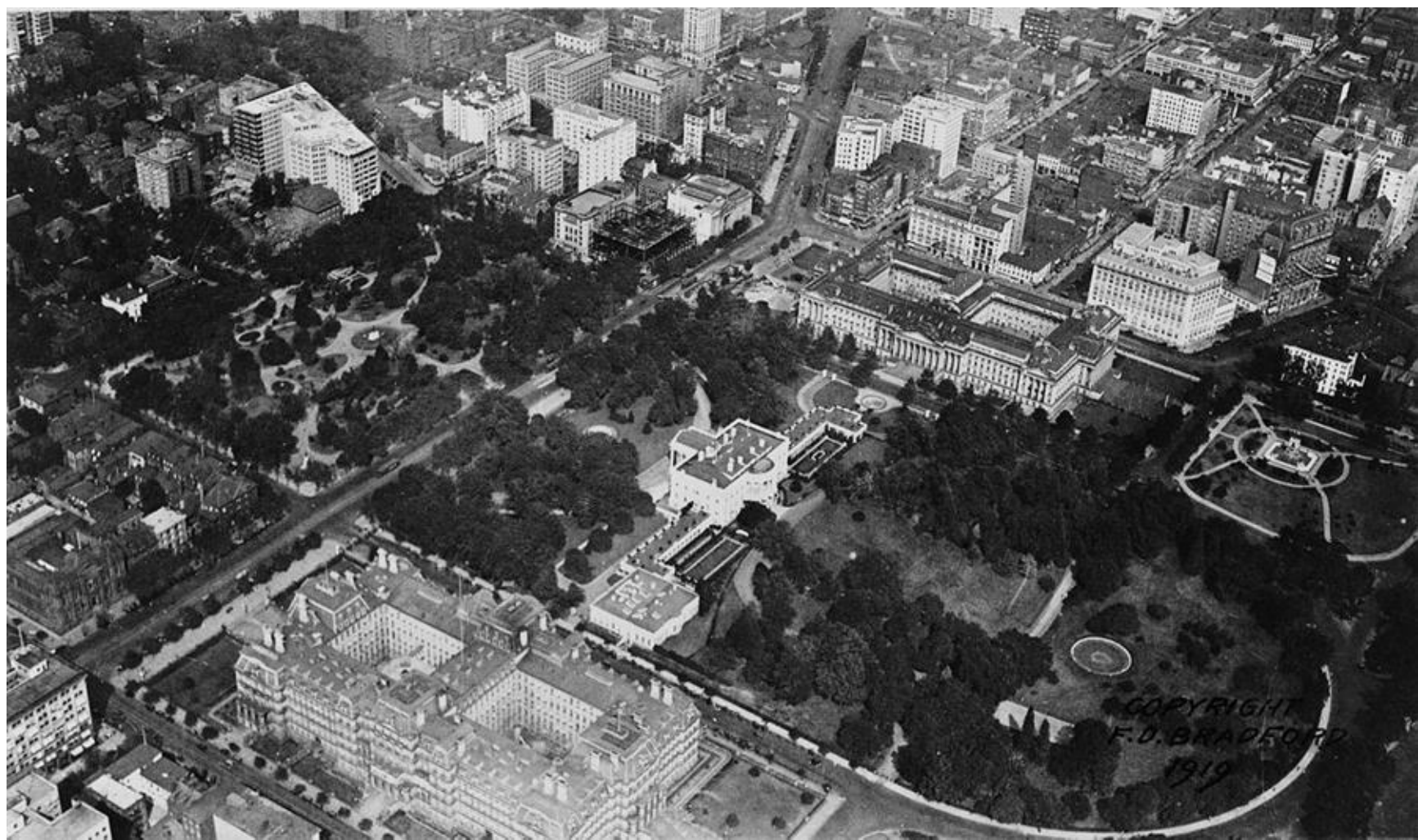




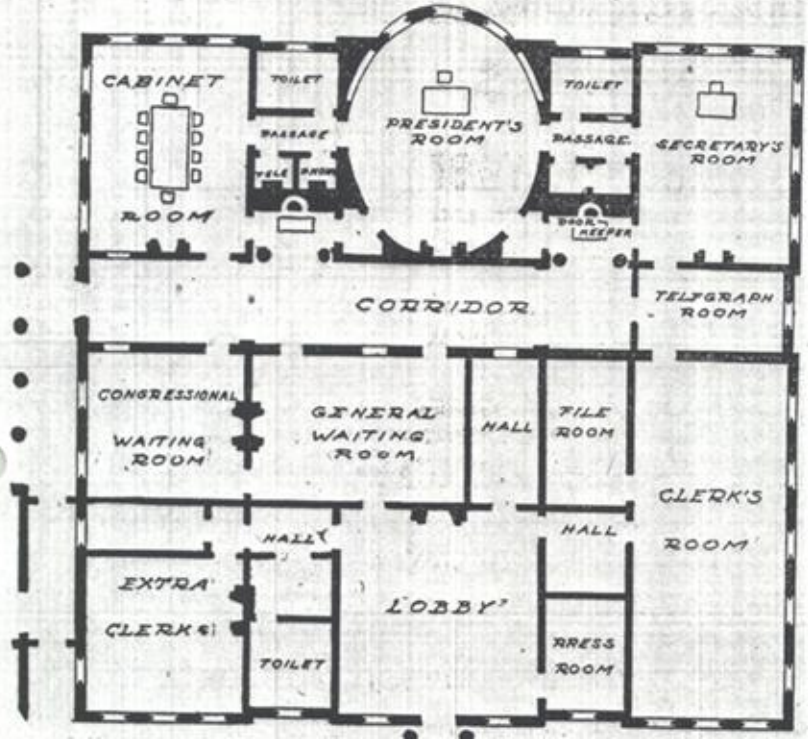




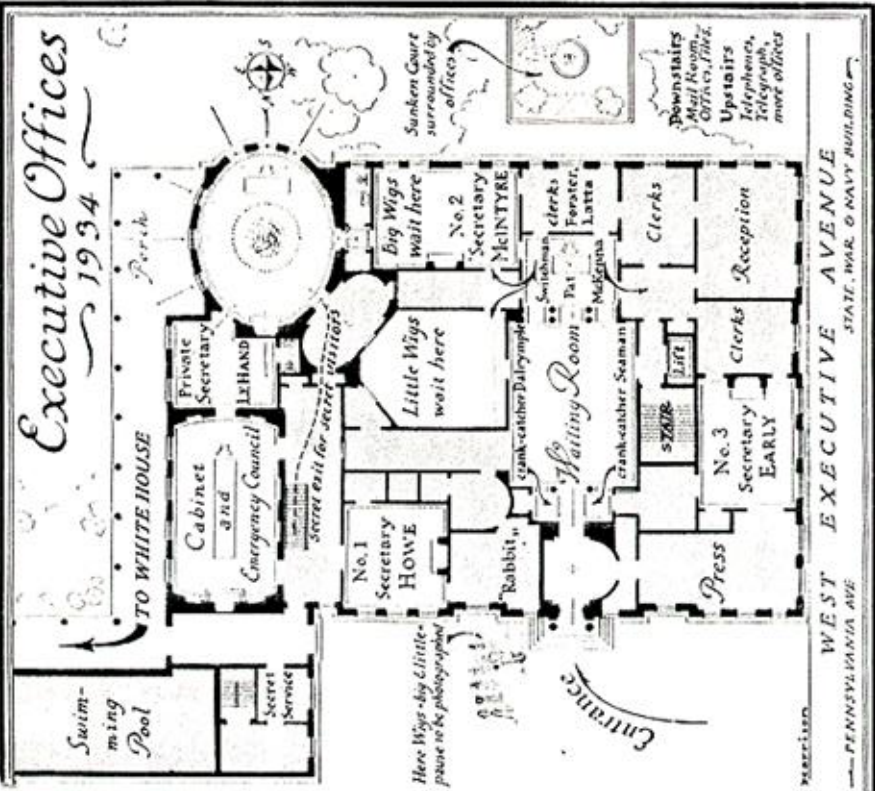




FIRST FLOOR PLAN OF EXECUTIVE OFFICES.



National Affairs—(Continued)









THE RUBENSTEIN CENTER

The David M. Rubenstein National Center for White House History is the Association's institute for White House research and education. Established in 2010, the center offers programs for learners of all ages that enhance the understanding of the Executive Mansion, and stimulate a sense of history and pride in our country.



WHITE HOUSE HISTORY TEACHER INSTITUTE
Education Professional Development



CLASSROOM RESOURCE PACKETS
Background Content and Primary Resources



VIDEO RESOURCES
Short Film Collection



NATIONAL HISTORY DAY RESOURCES
Project Ideas and More



RECOMMENDED WHITE HOUSE LITERATURE FOR YOUNG READERS
Selected Titles and Associated Bibliography



DIGITAL LIBRARY
Access to Our Entire Collection

History ChatBot

Tell me about the State Dining Room

The **State Dining Room** can seat as many as 140 important guests during a State Dinner. [Link to image info](#)

Learn more with the online article: [The White House State Dinner](#)

President George W. Bush in the State Dining Room (2005)

Courtesy of the George W. Bush Presidential Library and Museum



Type here or click on the mic



[Web Version- WH Experience](#)

Presidential Look-Alike



Ellen Arthur



RETAKE

SHARE



Website: www.whitehousehistory.org

Twitter: @whitehousehistry

Facebook: White House Historical Association

Email: education@whha.org

